

Insulated exhaust valves



[Download Wentyle](#)
[Download AlnorCAM](#)
[Buy via B2B](#)



Description

The KWI outlet valve is designed for mounting on ceilings, walls or directly on ducts with use of the special assembly frame RM. The KWI valve has a continuous adjustment of exhausted air by rotating central disc. Selected slot can be fixed by means of a fixing nut. Special construction of the valve ensures a low level of noise as well as easy and fast assembly.

Material: galvanized steel sheet
Finishing: glossy powder painted acc. to RAL 9016
Standard colour: white

Example identification

Product code: KWI - aaa

type _____
 Ød _____

* as standard without mounting frame included

Technical Data

Parameters

Volumetric flow q (l/s or m^3/h), total pressure loss P_t (Pa), and acoustic pressure level L_A (dB(A)), can be read from the figure.

Pressure losses P_t

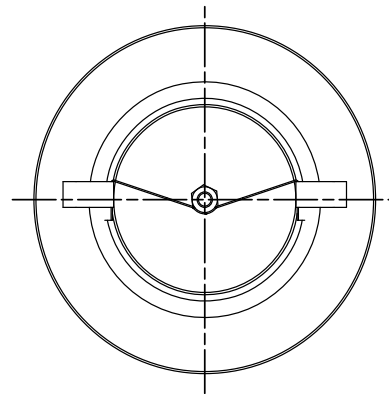
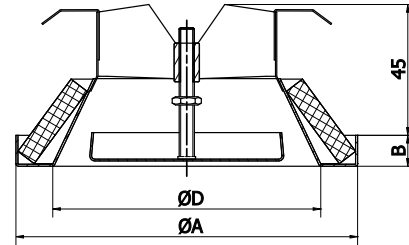
The figures show total pressure loss P_t (Pa).

Acoustic pressure level, L_A

The figure shows acoustic pressure level L_A (dB(A)).

The noise level is specified for a room attenuation of 4dB, which translates into attenuation in the reverberation zone of the SABINE room with an acoustic absorption of $10 m^2$.

Dimensions



$\varnothing D$ nom [mm]	$\varnothing A$ [mm]	B [mm]	weight [kg]
80	108	16	0,1
100	137	16	0,2
125	162	16	0,3
160	193	16	0,5
200	240	19	0,7

Acoustic pressure level, L_A (dB(A))

dimension [mm]	average frequency (Hz)						
	125	250	500	1000	2000	4000	8000
80	-2	-6	-5	1	-1	-5	-14
100	-2	-4	-3	0	-1	-8	-16
125	4	3	1	-1	-3	-12	-22
160	-1	0	1	0	-4	-13	-26
200	0	-5	1	2	-13	-28	-32
tolerance	3	2	2	2	2	2	3

Sound attenuation (dB)

dimension [mm]	average frequency (Hz)							
	63	125	250	500	1000	2000	4000	8000
80	24	18	14	9	7	7	7	9
100	22	16	11	7	5	5	5	7
125	21	14	9	7	4	4	6	8
160	14	13	8	5	4	4	7	7
200	17	10	6	4	3	4	8	4
tolerance	6	3	2	2	2	2	2	3